



## **Shelby County Landfill Scale House Building Project**

### **ADDENDUM NO. 2**

Date: September 4, 2024

RE: Shelby County Landfill Scale House Building Project

**BID DATE AND TIME:**

Tuesday, September 10, 2024 at 2:00 p.m.

Location for the bid opening remains the Shelby County Manager's Office, located at 200 West College Street, Room 123, Columbiana, Alabama, 35051

\*\*\*\*\*

**Clarifications:**

Q1: Please advise what kind of downspout boots/adapters should be used to connect the downspouts to the underground roof drains.

A1: Downspouts are to be 3" x 4" and shall connect to the roof drain system with a PVC adapter.

Q2: The site utility civil plan on C400 shows the overhead primary power being ran all the way to the generator location but the electrical site plan on E7 shows the transformer/riser pole before the parking lot starts and underground secondary being ran to the generator with underground telecom to the building. Please confirm we should follow the electrical plans.

A2: Reference sheet E-7 for site electrical.

Q3: Please advise where the curb & gutter, flume, and valley gutter around the parking lot should be carried in the bid. Should there be a separate alternate for this work?

A3: All concrete work is included in the base bid. The only exceptions are on the asphalt parking lot.

Q4 Please clarify what striping is included in the base bid.

A4: No striping is included in the base bid. The only striping is addressed in Alternate #4. All striping adjacent to the scale house will be performed by others.

Q5: Are the concrete side drain pipe and concrete head walls into the parking lot to be included in the base bid?

A5: Yes

Q6: Please advise if the traffic light control kits are to be provided by the owner along with the scale equipment package.

A6: The traffic light control kits should be included in this bid.

Q7: Please clarify the sizing of the transaction windows.

A7: See revised sheet A-5.

Q8: Who is the scale supplier?

A8: Birmingham Toledo. Contact is Sam Tate (205) 296-1635.

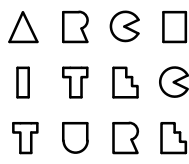
REVISIONS	BY
1	SJC

DRAWINGS COPYRIGHT © 2024  
ALL RIGHTS RESERVED  
Stephen Coker Architect LLC



Not Valid for Construction  
without Registration Seal

Shelby County Landfill Scale House Project  
AL Highway 70  
Shelby County, AL.



Stephen  
Coker  
Architect  
LLC

1000 Glen View Road  
Birmingham, Alabama 35222

Phone 205/595-0021

E-mail:  
steve@cokerarch.com

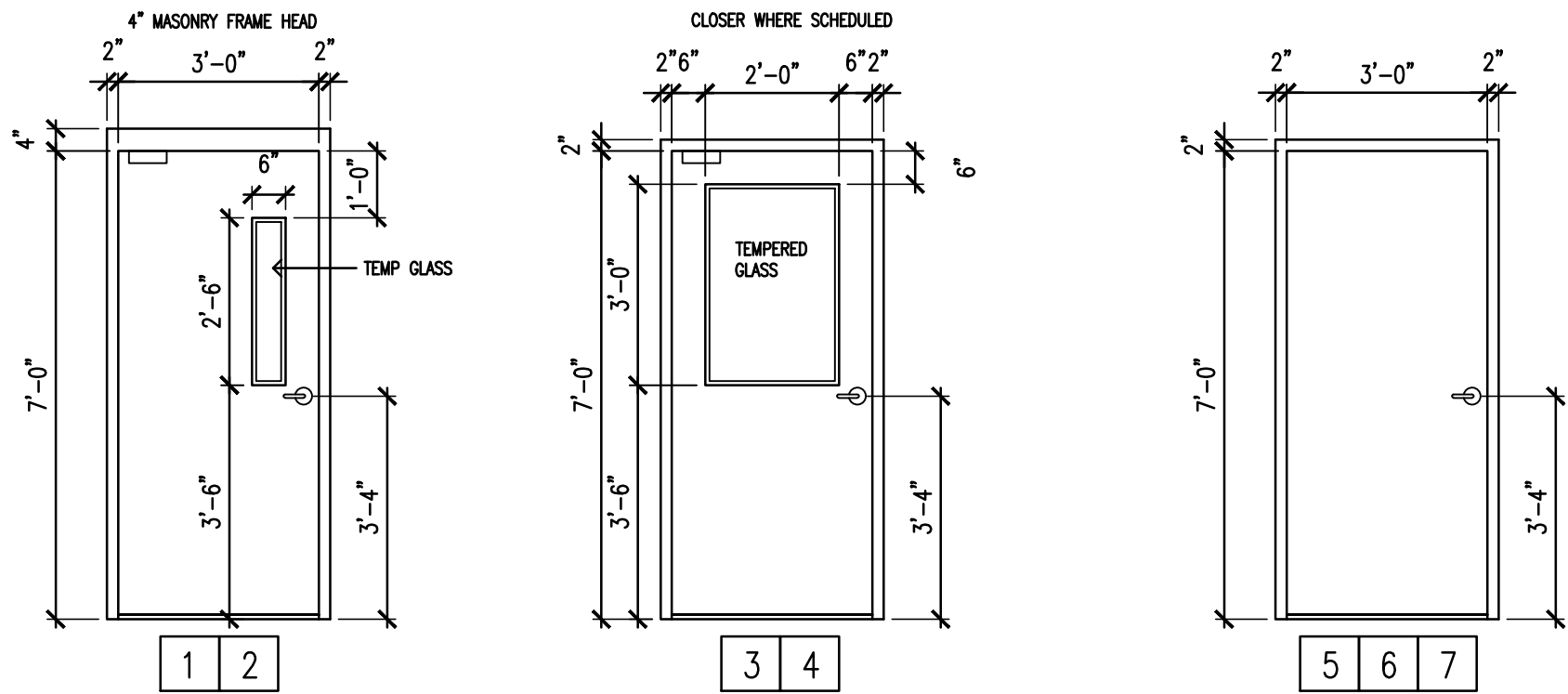
DRAWING DATE	7-10-2024
DRAWN BY	SJC
PROJECT NO.	260316

SHEET NO.

A5

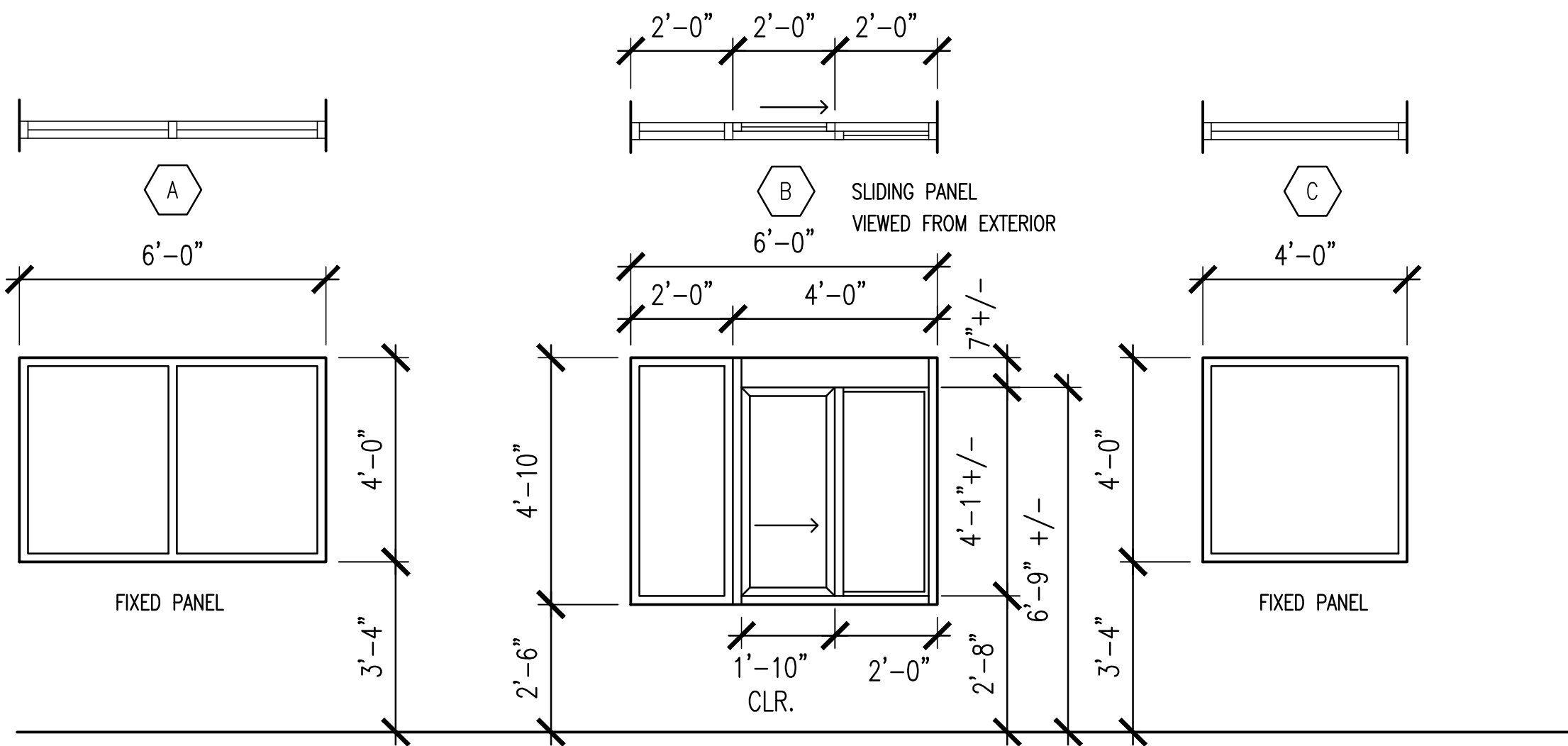
8 OF 11(A) SHEETS

GYPSUM BOARD LEVEL 4 FINISH										
ROOM	FLOOR	WALL BASE	WDW. TRIM	WALLS	WAINSCOT	CEILING	CLG. HGT.	DOORS	DOOR FRAME	WINDOW TRIM
101	LUXURY VINYL PLANK	4" RESILIENT	2" WOOD	PAINTED GYP. BD		2X2 A.T.C.	9'-0"	SEMI-GLOSS ENAMEL	SEMI-GLOSS ENAMEL	SEMI-GLOSS ENAMEL
102	LUXURY VINYL PLANK	4" RESILIENT	2" WOOD	PAINTED GYP. BD		2X2 A.T.C.	9'-0"	SEMI-GLOSS ENAMEL	SEMI-GLOSS ENAMEL	SEMI-GLOSS ENAMEL
103	LUXURY VINYL PLANK	4" RESILIENT	2" WOOD	PAINTED GYP. BD		2X2 A.T.C.	9'-0"	SEMI-GLOSS ENAMEL	SEMI-GLOSS ENAMEL	SEMI-GLOSS ENAMEL
104	LUXURY VINYL PLANK	4" RESILIENT		PAINTED GYP. BD		2X2 A.T.C.	9'-0"	SEMI-GLOSS ENAMEL	SEMI-GLOSS ENAMEL	SEMI-GLOSS ENAMEL
105	LUXURY VINYL PLANK	4" RESILIENT		PAINTED GYP. BD		2X2 A.T.C.	9'-0"	SEMI-GLOSS ENAMEL	SEMI-GLOSS ENAMEL	SEMI-GLOSS ENAMEL



NOTE: DOOR ELEVATIONS ARE NOT SHOWN HAND-SPECIFIC. SEE FLOOR PLAN FOR SWING DIRECTION

DOOR ELEVATIONS  
scale: 3/8" = 1'-0"



EXTERIOR GLASS:  
1" INSULATED TINTED GLASS  
IN 2 X 4.5" THERMALLY-BROKEN  
DARK BRONZE ANODIZED STOREFRONT SASH

TRANSACTION WINDOW GLASS:  
3/4" INSULATED TINTED GLASS  
IN 2 X 4.5" THERMALLY-BROKEN  
DARK BRONZE ANODIZED SLIDING  
WINDOW FRAME. CENTER OPERABLE  
PANEL TO BE MANUAL OPEN / SELF  
CLOSE.

QUIKSERV, READY ACCESS, OR  
APPROVED EQUIVALENT

INTERIOR GLASS: 1/4" SINGLE PANE  
TEMPERED POLISHED PLATE GLASS IN  
2 X 4.5" DARK BRONZE ANODIZED STOREFRONT SASH

WINDOW ELEVATIONS  
scale: 3/8" = 1'-0"

## DOOR SCHEDULE

HOLLOW METAL DOORS - 18 GA. HOLLOW METAL FRAMES - 16 GA.

REFERENCE	EXPOSURE	WIDTH	HEIGHT	THK.	MATERIAL	TYPE	FRAME	GLASS	FIRE RATING	DESCRIPTION	REMARKS
1	EXTERIOR	3'-0"	7'-0"	1 3/4"	HOLLOW METAL	FLUSH PANEL	GALVANNEALED HOLLOW METAL	YES	NO	INSULATED METAL DOOR 4" MASONRY FRAME HEAD	2X6 STUD WALL PROVIDE ELECTRIC STRIKE
2	EXTERIOR	3'-0"	7'-0"	1 3/4"	HOLLOW METAL	FLUSH PANEL	GALVANNEALED HOLLOW METAL	YES	NO	INSULATED METAL DOOR 4" MASONRY FRAME HEAD	2X6 STUD WALL PROVIDE ELECTRIC STRIKE
3	INTERIOR	2'-6"	7'-0"	1 3/4"	HOLLOW METAL	FLUSH PANEL	HOLLOW METAL	YES	NO		
4	INTERIOR	3'-0"	7'-0"	1 3/4"	HOLLOW METAL	FLUSH PANEL	HOLLOW METAL	YES	NO		
5	INTERIOR	3'-0"	7'-0"	1 3/4"	HOLLOW METAL	FLUSH PANEL	HOLLOW METAL	NO	NO		
6	INTERIOR	3'-0"	7'-0"	1 3/4"	HOLLOW METAL	FLUSH PANEL	HOLLOW METAL	NO	NO		PROVIDE ELECTRIC STRIKE
7	INTERIOR	3'-0"	7'-0"	1 3/4"	HOLLOW METAL	FLUSH PANEL	HOLLOW METAL	NO	NO		2X6 STUD WALL

## DOOR HARDWARE SCHEDULE

VERIFY KEYING MATRIX WITH OWNER INTERIOR DOOR HARDWARE FINISH: US 26D SATIN CHROME

REF	HINGES	EXIT LOCK	LOCKSET	PASSAGE LATCH	PRIVACY LATCH	PUSH/PULL	DBL DEADBOLT	HD. & FT. BOLT	CLOSER	STOP	GLASS	KICKPLATES	WEATHERSTRIP	THRESHOLD
1	3		** X						X	X	X	X	X	X
2	3		** X						X	X	X	X	X	X
3	3			X					X	X	X	X		
4	3		X							X	X			
5	3		X							X				
6	3		** X							X				
7	3				X					X				

EXIT LOCK: OPENING DOOR FROM INSIDE IS LIMITED TO A SINGLE ACTION OF TURNING LEVER. DEADBOLT AUTOMATICALLY RETRACTED WITH LATCHBOLT. CRASH BAR IS AN OPTIONAL EXIT DEVICE.

LOCKSET: THUMBTURN INSIDE LOCKS DOOR FROM OUTSIDE. OUTSIDE KEY RETRACTS LOCKBOLT. POSITION OF THUMBTURN DETERMINES OUTSIDE KNOB REMAINING LOCKED OR UNLOCKED.

ALL FUNCTIONS ALWAYS UNLOCKED FROM INSIDE. ALL OPERATING DEVICES TO BE ADA/ANSI APPROVED LEVER HANDLES UNLESS SPECIFICALLY REQUESTED BY OWNER ON NON-ADA/ANSI SPACES.

ALL OPERATING DEVICES TO BE ADA/ANSI APPROVED LEVER HANDLES.

ALL HARDWARE FINISHES TO BE US 26D BRUSHED CHROME.

ANSI GRADE 1 CYLINDRICAL LEVER LOCKS AND DEADBOLTS.

LOCKSET HARDWARE ON DOORS 1,2,4,5,6 SHALL BE FURNISHED AND INSTALLED WITHOUT KEY CYLINDER CORES.  
LOCKSETS SHALL BE DESIGNED FOR AND CAPABLE OF ACCEPTING "SCHLAGE 1/C" KEY CYLINDER CORES.  
KEY CYLINDERS FURNISHED AND INSTALLED BY OWNER.

\*\* ACCESS CONTROL ELECTRIC STRIKES REQUIRED ON DOORS 1, 2, 6.

## INTERIOR FINISHES:

RUBBER BASE : 4" COVE JOHNSONITE #63 "BURNT UMBER B"

LUXURY VINYL TILE: MOHAWK GROUP - HOT & HEAVY - LINEATE - 948 FIGURED

ACOUSTICAL TILE: 2X2 SQUARE TEGULAR-EDGE ACOUSTIC CEILING TILE

WALL PAINT: SW 6073 "PERFECT GREIGE" EGGSHELL LATEX

DOORS AND FRAMES: SW 7020 "BLACK FOX" SEMI-GLOSS

CORNER GUARDS: IPC 150 3" X 8' "PEPPERDUST" 0119. INSTALL AT ALL OUTSIDE CORNERS.

## EXTERIOR FINISHES:

BRICK VENEER: ACME "SLATE GRAY" PEP 167 - 106905 SMOOTH TEXTURE

BRICK MORTAR: TBD

ROOF METAL, GUTTERS, DOWNSPOUTS: BURNISHED SLATE COLOR

DOOR AND WINDOW FRAMING: DARK BRONZE ANODIZED

DOORS, FRAMES, EAVE PAINT: SW 7020 "BLACK FOX" SEMI-GLOSS

scale is accurate on 24"x36" sheets only